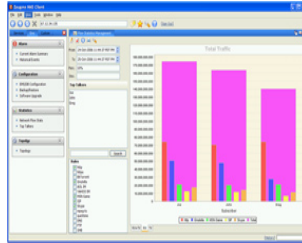


ZEUGMA OSS

HIGHLIGHTS

- **Open Application Sandbox:**
New applications can be provisioned into the Zeugma Open Application Sandbox. These applications are extended with additional capabilities provided via the Zeugma OSS. Database services, data archiving, data analysis and data presentation are examples of some the uses.
- **Configuration Management:**
ZOSS can manage configurations of multiple ZSNs. With full scheduled backup and emergency restoration.
- **Health Monitoring:**
Alarms and events are captured by the Zeugma OSS for review and action by the operator.
- **Systems Interface Adaptation:**
The ZOSS supports SOAP/XML integration and is easily extended with additional protocols for integration with existing systems.
- **Statistical Analysis:**
The ZSN transfers collected flow statistics on all subscribers and their services the ZOSS. Full analysis of data is available from the aggregate views to individual subscriber views.



The Zeugma OSS (ZOSS) is a powerful companion to the Zeugma Services Node (ZSN). Not only does it provide configuration and health management of the ZSN, but it also extends the Zeugma Open Application Sandbox (OAS) with capabilities that may require database services, offline processing and data analysis.

The Zeugma OSS is a carrier grade system that provides extensible interfaces for both new and existing billing systems. The ZOSS foundationally supports configuration management of ZSN deployments, as well as health monitoring. In addition to these foundational capabilities, ZOSS offers the ability to extend capabilities of applications that run in the Zeugma OAS.

Architected on top of a robust Oracle SQL database, the ZOSS is a Java based application that communicates with the ZSN through a SOAP/XML interface. The ZOSS is flexible enough to support multiple northbound interface protocols such as CORBA and/or COPS.

Out of the box the ZOSS supports the collection, archiving and analysis of flow aggregation data collected on the ZSN. Configurable on the ZSN, flow statistics can be collected and uploaded to the ZOSS on an interval basis. ZOSS can be used to look at aggregate data to determine network usage characteristics, as well as drill down to the subscriber level view.

Extending the Zeugma OAS is the ability to install a corresponding application component on the ZOSS system. A great example of this is the QOE Monitor application. Quality metrics from Video and Voice sessions are aggregated and transferred to the ZOSS database, where the data can be analyzed and presented in a meaningful format. Application components running on ZOSS are also able to source information that can be sent to an application on the ZSN.

The Zeugma OSS is a powerful tool that is key to fully realizing the benefits of the Zeugma Services Node and Zeugma Open Application Sandbox. It plays an important role in ensuring the health of live ZSNs, while further enhancing the capabilities of applications running on the ZSN in the Zeugma OAS.